

# UNION CEMETERY GROUNDS

EXTENT 6. AC PURCHASED MAR 17<sup>TH</sup> 1859

WIDTH OF STREETS

UNION AVE. 20 FT; CENTRAL AVE 10 FT; NORTHERN, SOUTHERN  
& WESTERN WITH BRANCHES 12 FT, ALL OTHERS 6 FEET.

MAP PLATTED FEB 1860.

SCALE 32 FEET TO ONE INCH

FILED MARCH 12, 1860 IN THE  
COUNTY RECORDERS OFFICE SAN MATEO COUNTY

B. G. LATHROP  
County Recorder

SEAL OF RECORDER

UNION  
CEMETERY ASSOCIATION  
ORGANIZED FEB 26<sup>TH</sup> 1859

OFFICERS FIRST ELECTED & ACTING

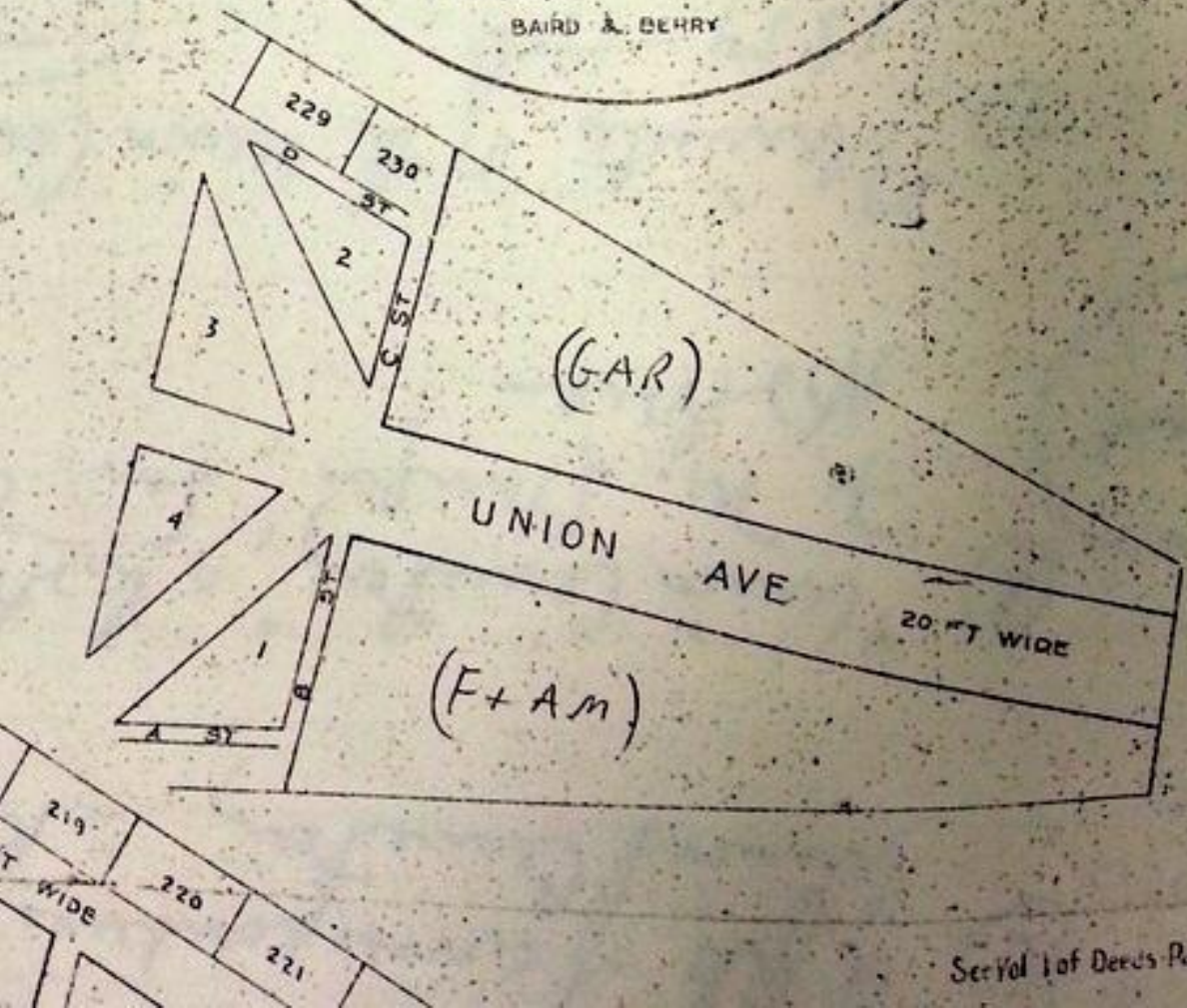
President \_\_\_\_\_ John V Diller  
 Secretary & Treasurer \_\_\_\_\_ Charles N Fox  
 Superintendent \_\_\_\_\_ James W Turner

NAMES OF CONTRIBUTING MEMBERS

S M Mezes, John V Diller, John W Ackerson, Chew & Hilton  
 Chas Hanson, Geo H Howard, Alex Garbi, J W Turner, J C McLeod  
 Finger & Beyer, M L Brittan, Chas N Fox, B G Lathrop, W G Beck  
 John Q A Thurber, Chas Ayers, John I Ellet, W T Gough  
 Z Ostrom, J M Curtis, W<sup>m</sup> H Douglas  
 T G Phelps, Horace Hawes

BAIRD & BERRY

OS  
ERN  
ET  
COUNTY  
Recorder





# UNION CEMETERY GROUNDS

EXTENT 6 AC PURCHASED MARCH 27TH 1859  
 WIDTH OF STREETS  
 UNION AVE 30 FT, CENTRAL AVE 10 FT, NORTHERN, SOUTHERN  
 & WESTERN WITH BRANCHES 12 FT, ALL OTHERS 8 FEET  
 MAP PLATTED FEB 1860.  
 SCALE 32 FEET TO ONE INCH

FILED MARCH 12 1860 IN THE  
 COUNTY RECORDERS OFFICE SAN MATEO COUNTY

B G LATHROP  
 County Recorder

SEAL OF RECORDER

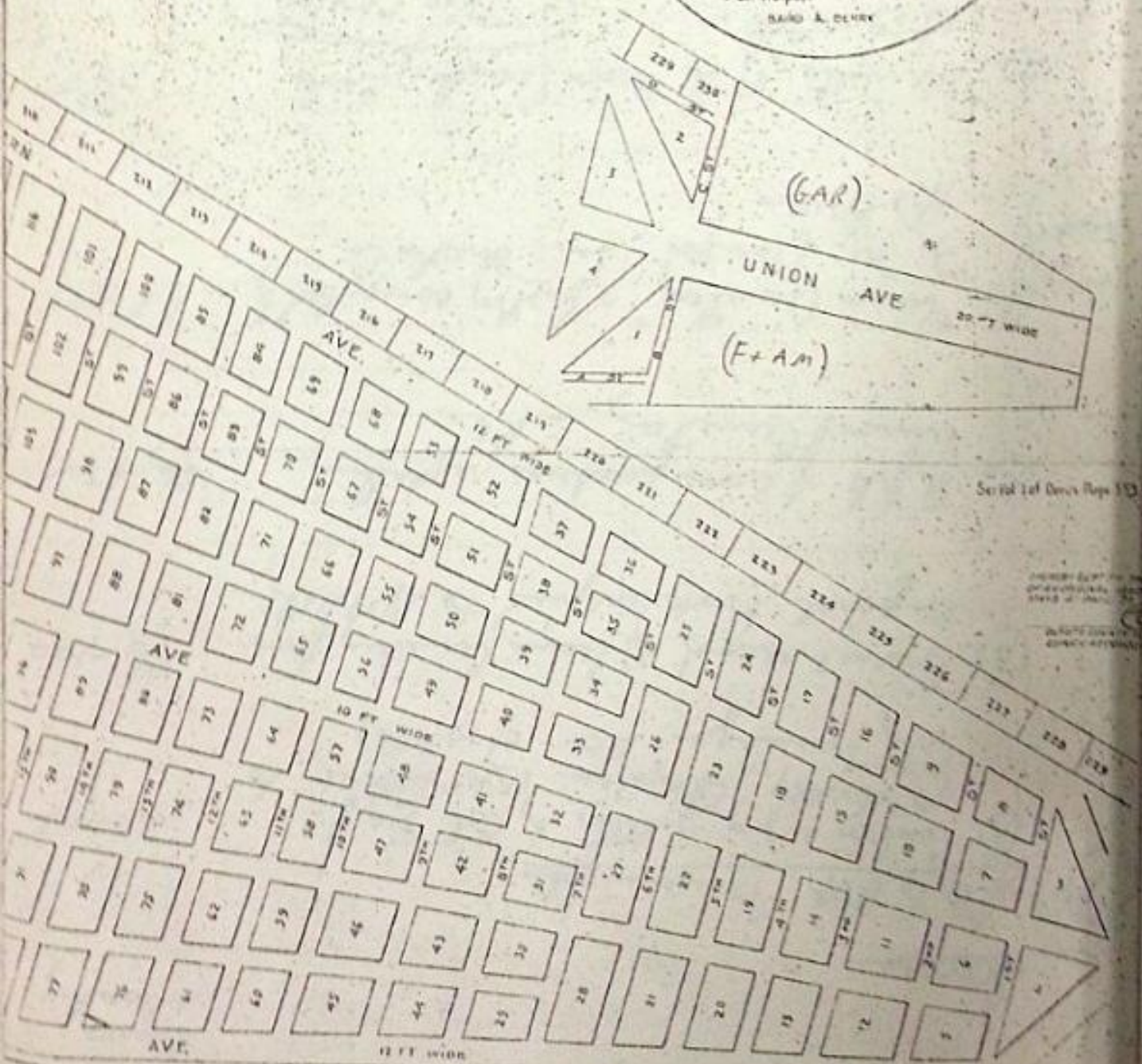
## UNION CEMETERY ASSOCIATION ORGANIZED FEB 28TH 1859

OFFICERS FIRST ELECTED & ACTING

President \_\_\_\_\_ John V Diller  
 Secretary & Treasurer \_\_\_\_\_ Charles N Fox  
 Superintendent \_\_\_\_\_ James W Turner

NAMES OF CONTRIBUTING MEMBERS

S M Mezes, John V Diller, John W Ackerson, Chew & Hilton  
 Chas Hansen Geo H Howard, Alex Garbi, J W Turner, J C M Lead  
 Fugate & Bryer, M L Britton, Chas N Fox, B G Lathrop, W G Beck  
 John Q Thurber, Chas Ayers, John Eillet, W T Gough  
 Z Osborn, J M Curtis, W H Douglas  
 T G Phelps, Horace Hawes  
 BIRD & OLNEY



Serial Plat Books Page 153

RECORDED BY THE  
 COUNTY RECORDER  
 STATE OF CALIF.

IN WITNESS WHEREOF  
 I HAVE CAUSED THIS  
 MAP TO BE PLATTED  
 IN THE COUNTY OFFICE

# Notes

- ① C. AYRES (spelling on plot) = Plot 109
- ② W. G. BECK = Plot 120
- ③ W. H. DOUGLASS = Plot 113
- ④ J. C. M<sup>C</sup>LEOD = Plot 183
- ⑤ B. G. LATHROP = Plot 169
- ⑥ C. D. JUDAH = Plot 167
- ⑦ J. V. DILLER = Plot 157
- ⑧ A. GARBI = Plot 152
- ⑨ C. N. FOX = Plot 123
- ⑩ CHEW + HILTON = Plot 119
- ⑪ S. M. MESES = Plot 131
- ⑫ GEO. H. HOWARD = Plot 178
- ⑬ C. HANSEN = Plot 118

all located  
between Center  
& Northern Ave  
on original plot

- ⑭ Coelha, Lind, Rollen + Haggard  
Woodside Rd.  
= Plot 111 of Union Cemetery  
Redwood City May 1909  
C. Rollock